



Pacific Charter Institute

THE REPORT
2019 - 2020



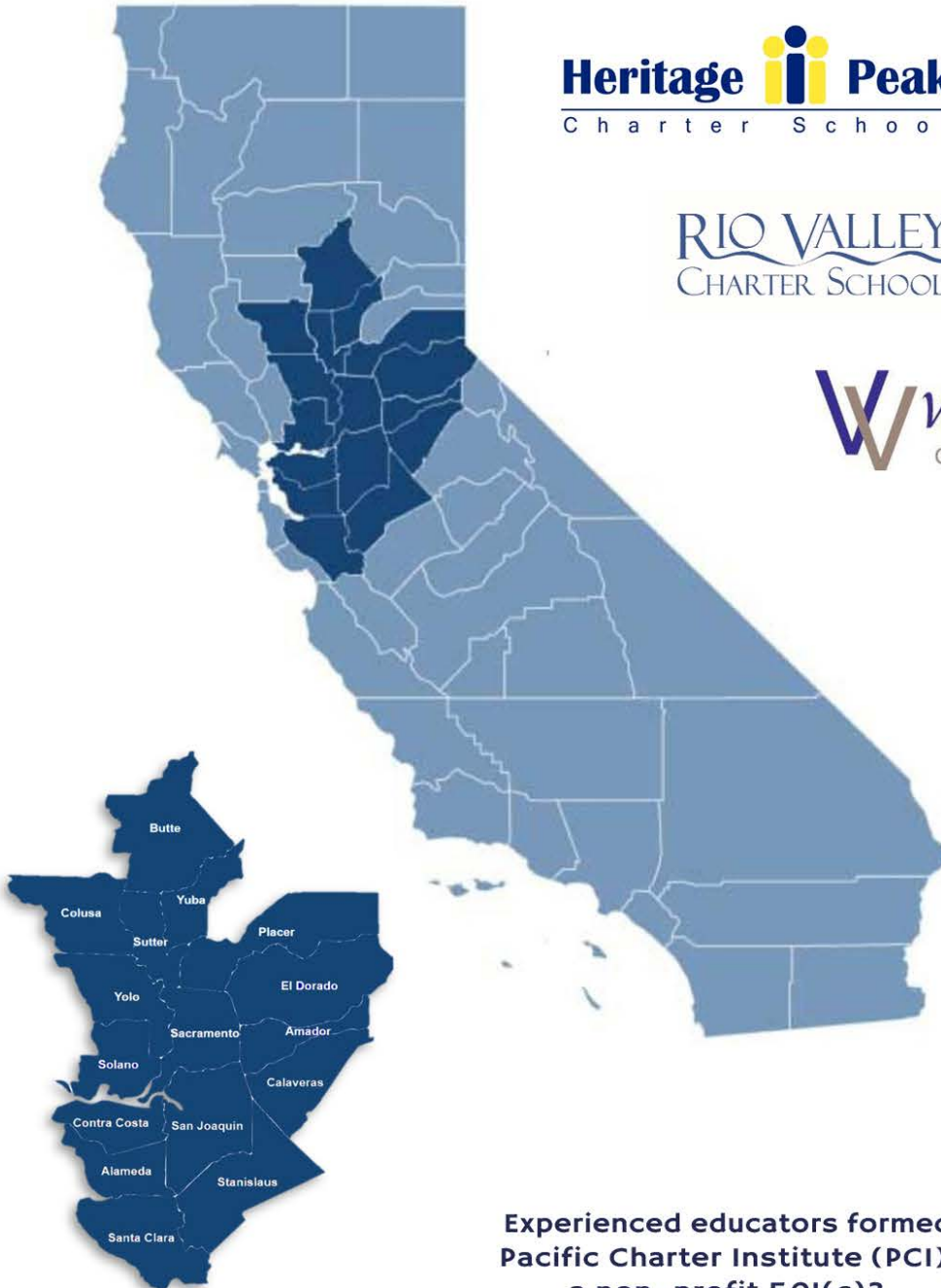
I didn't
get here by
wishing for it,
or hoping for it,
but by working
for it.

CLASS OF
2020
RWHS

15 YEARS
STRONG



Pacific Charter Institute



Heritage  Peak
C h a r t e r S c h o o l

RIO VALLEY
C H A R T E R S C H O O L

W *Valley View*
C H A R T E R P R E P


Sutter Peak
C H A R T E R A C A D E M Y



Experienced educators formed Pacific Charter Institute (PCI), a non-profit 501(c)3 public benefit corporation, incorporated in 2004.



MISSION

PACIFIC CHARTER INSTITUTE EMPOWERS STUDENTS TO TAKE CHARGE OF THEIR EDUCATION BY CONNECTING THEIR INDIVIDUAL NEEDS AND INTERESTS TO A RIGOROUS LEARNING PLAN, THUS CREATING SELF-MOTIVATED RESPONSIBLE CITIZENS, CRITICAL PROBLEM-SOLVERS, AND LIFELONG LEARNERS.

VISION

DEVELOPING SELF-MOTIVATED, EDUCATED INDIVIDUALS IN THE SACRAMENTO REGION WHO WILL SPREAD THE WEALTH OF KNOWLEDGE WORLDWIDE IN A MEANINGFUL WAY.

BOARD OF DIRECTORS

BETH KAY, PRESIDENT
GARY BORDEN, J.D.
REX FORTUNE, PH.D.
JUDY MILLER
JOSHUA MODLIN
JEAN-PAUL PRENTICE
KEVIN SMITH-FAGAN



Pacific Charter Institute

**EVERYONE IS
WELCOME**



- Pacific Charter Institute Schools do not charge tuition
- Pacific Charter Institute Schools are non-sectarian
- Pacific Charter Institute Schools do not discriminate on the basis of race, color, religion, age, gender, gender expression, gender identity, sexual orientation, citizenship, disability, national or ethnic origin in administration of its admissions policies or education programs

Editor's Note



Marcie Grill, Ed.D
**Director of Outreach
& Public Affairs**

Thank you for reading the 2019-2020 edition of Pacific Charter Institute's Annual Report. Its purpose is to not only provide transparency as a non-profit organization, but to share its story. During a year many will define in terms of COVID-19, PCI achieved a successful 15th year.

PCI met its strategic goals. Teachers assessed the literacy progress of 91% of our K-2 students in the field. Older targeted students were motivated to complete over 170,000 learning activities with more than 20,000 hours of time on task. With a few exceptions due to SPED, all freshmen and

sophomores were placed in a-g pathways. A strategic focus on CTE to a 33% increase in the scope of our online training courses and our resource centers, adding new dual enrollment opportunities.

PCI continued its focus on families and students. Staff were able to host 95 scheduled family excursions before destinations were closed. Tech support, virtual classes, and all methods of communication stepped up when stay-at-home orders hit. PCI's Business Department was able to work with our community partners for approved virtual activities. Three of our schools were collaboratively first in the region to host graduation ceremonies at a drive-in theater, while the fourth school live-streamed their event for families. At these events, 38 graduates received scholarships supported mainly from monthly staff contributions. Staff were not forgotten either, with survey results showing positive responses in satisfaction.

I hope you enjoy the report, and I would like to thank the departments and schools for their statistical contributions. When woven together, a powerful story of dedication and success of PCI and its family of schools truly emerges.

Sincerely,

-Marcie



Visit us at
PacificCharters.org

CONTENTS

6 EXECUTIVE
DIRECTOR'S
MESSAGE

10 OUR STUDENTS

14 EXCURSIONS

16 RESPONSIVENESS

18 CAREER & COLLEGE

20 GRADUATION

22 STRATEGIC GOALS

24 OUR STAFF

26 FISCAL
RESPONSIBILITY

28 SCHOLARSHIP
SUPPORT

30 COMMUNITY
PARTNERSHIPS

Follow us on
Social Media!



Over 300K Video Views!
[vimeo.com/
pacificcharterinstitute](https://vimeo.com/pacificcharterinstitute)



[facebook.com/
PacificCharterInstitute](https://facebook.com/PacificCharterInstitute)



[www.instagram.com/
pacific_charter_institute](https://www.instagram.com/pacific_charter_institute)

#PCIstrong
#PacificCharters



Message from the Executive Director

Paul Keefer, MBA, Ed.D.

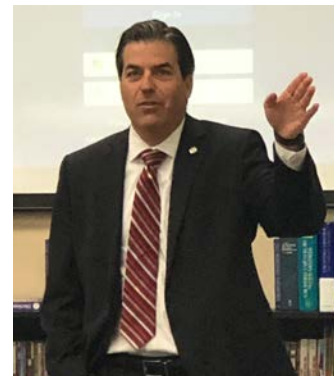
*The 2019-2020 school year proved both educational and operational success for students is possible with committed and engaged staff! Granted our year took a major shift with COVID-19, the PCI Team successfully pivoted to **remain open** and focus on the successful tools developed by our teachers and staff. Our PCI team certainly miss the opportunity to demonstrate our hard work on the CAASPP statewide assessment. Yet, we successfully modified our graduation ceremonies to meet the social distancing requirements and continue to uncover untapped talent and skill sets by our staff and students using the virtual platform across the organization.*

The 2019-2020 Annual Report outlines the incredible amount of actions and effort across all our departments and schools during the school year. The PCI Leadership Team tightly integrated functions across the organization minimizing surprises and expanding collaboration across schools.

The schools provided clear direction to the families for interventions and grade level instruction in early literacy as well as language arts and mathematics. Exact Path usage across the schools demonstrated clear implementation and dedication by the directors and the teachers as our targeted students completed over 170,000 activities and over 20,000 hours of time on task! We assessed over 91% of our K-2 students for early literacy with DIBELS and provided personalized interventions. Our goal of increased rigor and a-g completion for our students grades 9-10 indicates our efforts are paying off as we continue to close in on 100% of students completing the courses.

Our Information Technology Team recommended and implemented the Microsoft 365 platform prior to the COVID-19 pandemic because of its alignment to PowerSchool. We continue to migrate staff from the Zoom platform to Microsoft Teams, increasing security and maximizing access to our tools. Additionally, I.T. made both devices and connectivity available to all our students and staff. The team also ensured that internet safety and security were fully implemented to remain compliant for the protection of our students.

(Continued on page 8)



Dr. Paul Keefer and Dr. Rex Fortune

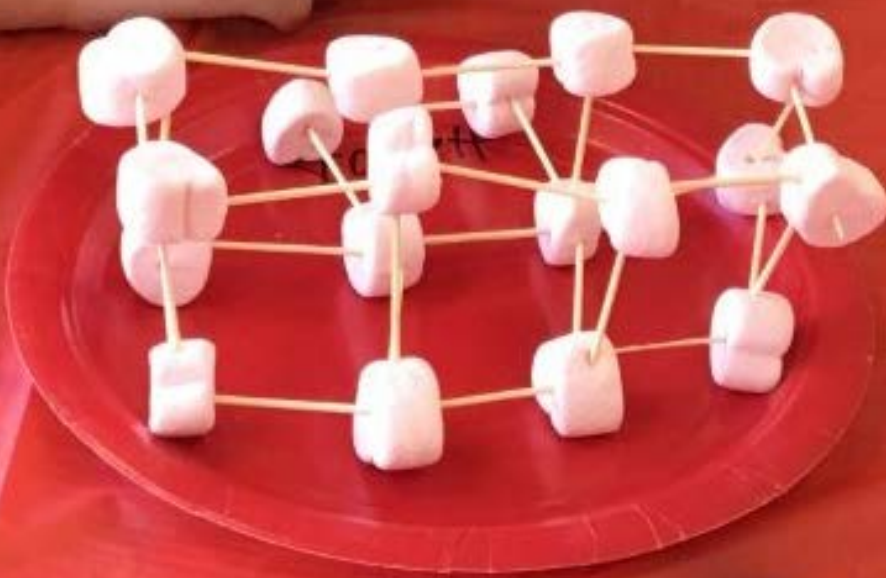


Kevin Smith-Fagan and Dr. Paul Keefer

CHARTER SCHOOLS **4**

6 RESOURCE CENTERS

ACADEMIC PROGRAMS **10**



(Continued from page 6)

The business office remains steady at the wheel working closely with Human Resources and the school directors ensuring expenditures are in alignment with budgets. Further, PCI ensured its prudent budgeting, coupled with clear oversight, allowed for a solid reserve as public schools go into a very difficult fiscal environment.

Human Resources truly raised the expectations for supervisors to engage and support staff. The team successfully managed staffing transactions in a professional manner in all aspects of human resources including hiring, separation, retirement, health benefits, and employee rights. This year the HR Team developed and implemented a comprehensive onboarding process for new employees that ensures better communication, better individualized support, and better discrete professional development. Our staff satisfaction survey clearly indicates that we are moving in the right direction.

Thank you for your support of Pacific Charter Institute. I look forward to a year of continued success in 2020-21.

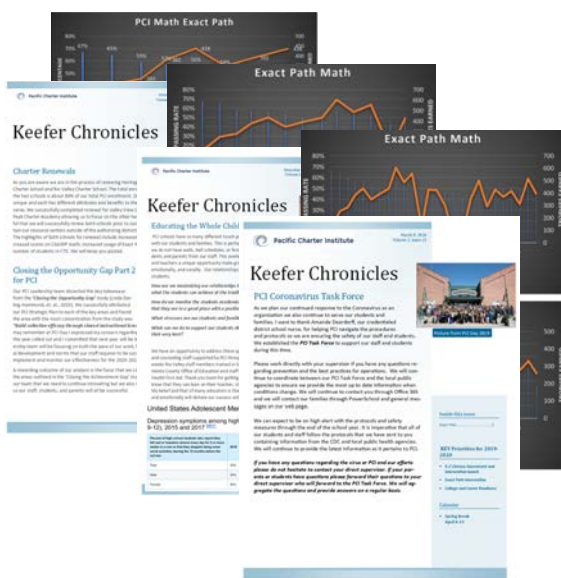
Sincerely,

Paul Keefer, MBA, Ed.D.
Executive Director

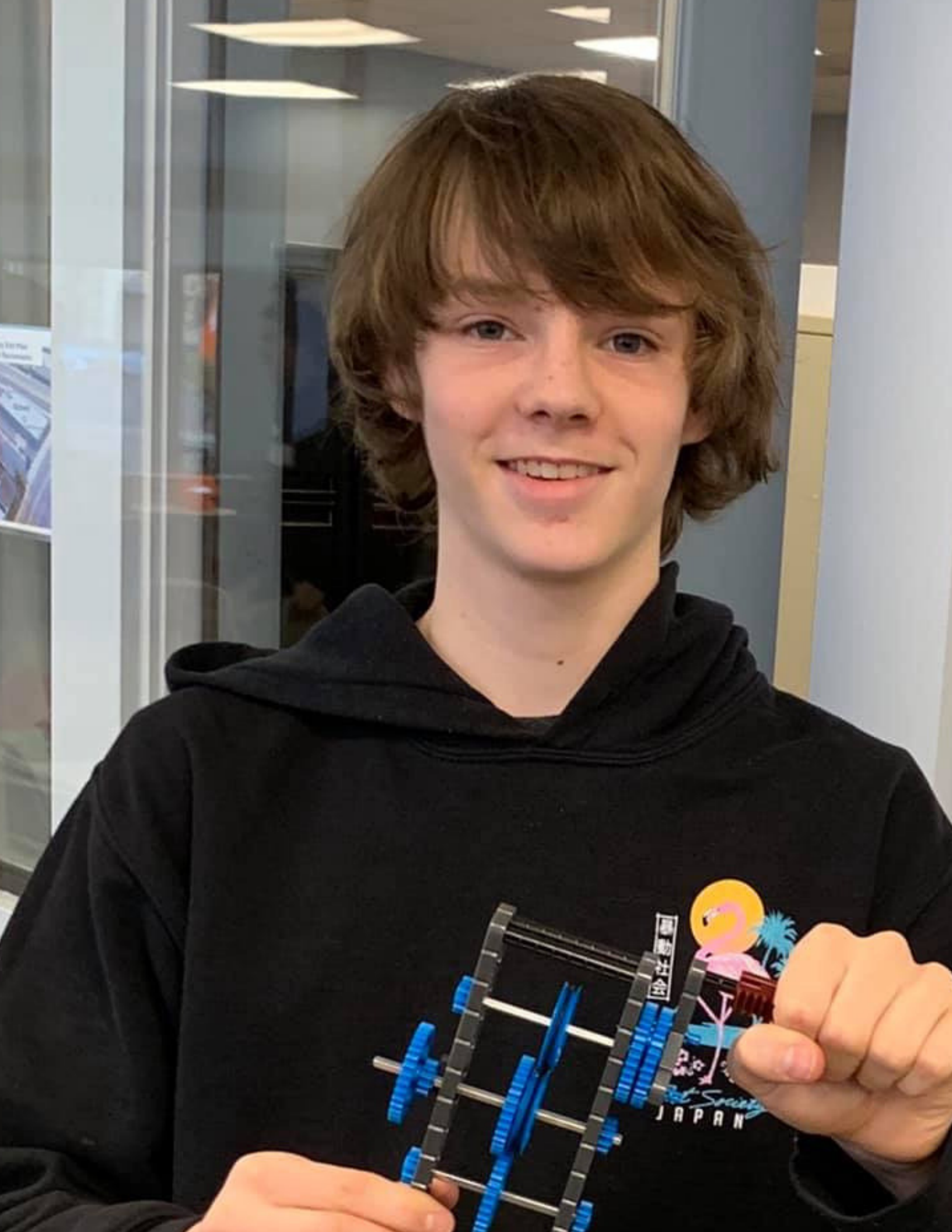


EXECUTIVE DIRECTOR

Messaging What Matters



Weekly communications were sent to all PCI staff via the Keeper Chronicles. Important and timely topics, selected directly by Dr. Keefer, included legislative updates, academic insights, and corporate news. Every issue included Exact Path usage reports, keeping the team laser-focused on academic growth. Additionally, PCI held its first live online question and answer session for ALL PCI staff at the end of the year, allowing for the flow of information in both directions in real time.



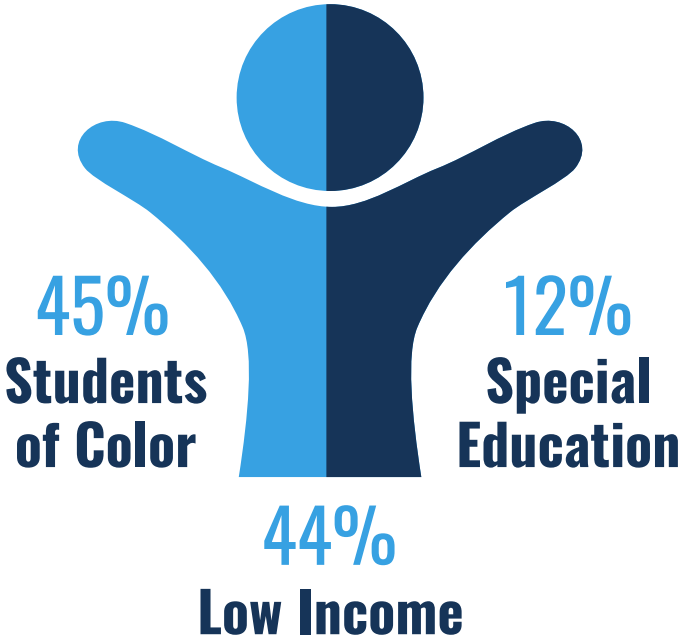
運動社会

JAPAN

OUR STUDENTS

Pacific Charter Institute believes that all families deserve school choice. A vetted enrollment lottery of new students ensures transparency and equal access, both core to PCI's beliefs. Our schools also work with local districts to provide alternatives when an outside choice is warranted. In fact, our Families in Transition program supported and identified 79 homeless students this year. While our family of schools offers homeschooling support and independent study learning opportunities, we also ensure equal access always means equal.

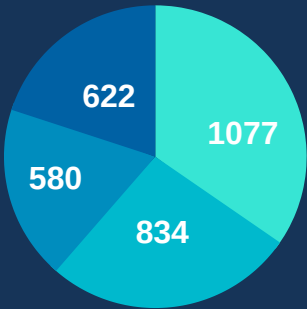
3.1 K
Students



Valley View Charter Prep
20%

Heritage Peak Charter School
34.6%

Sutter Peak Charter Academy
18.6%



Enrollment Distribution
(as of 10/2/2019)

Rio Valley Charter School
26.8%



OUR STUDENTS

287 GRADUATES

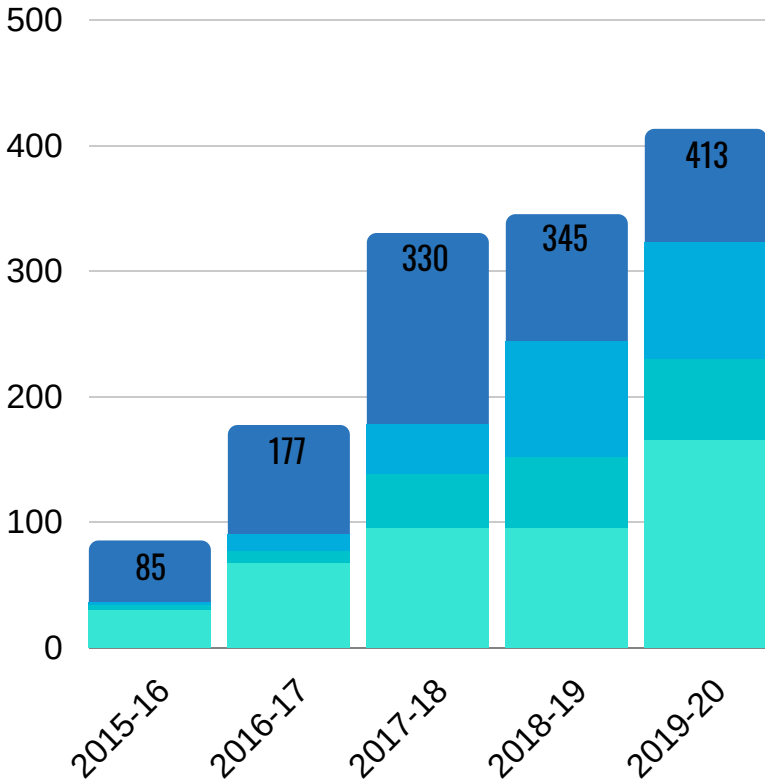
CAREER CERTIFICATIONS EARNED **178**

38 SCHOLARSHIPS AWARDED

STUDENTS IN PROJECT LEAD THE WAY **180**

Career and College Readiness for our students is part of our strategic goals. Gaining college credits while in high school eases the transition for students, saves costs to families, and allows students to envision a successful future within their reach. The chart on the right reflects the steady increase in the number of PCI students taking advantage of this opportunity.

413 CONCURRENTLY ENROLLED STUDENTS



Concurrent Enrollment Student Numbers (5 Year Trend)







95 Field Excursions

Our staff led 95 field excursions and countless park days before closures related to COVID-19 began in March with an additional 30 having to be cancelled. In addition to outdoor education, museums, and cultural educational opportunities, 118 of our teens were able to participate in the Hamilton educational experience at the Orpheum in San Francisco funded by the Gilder Lehrman Institute.





RESPONSIVE TO NEEDS

PCI began the year showing its strategic agility and responsiveness with new programs. VOLTs (Virtual Opportunities to Learn Together) gave our homeschool parents added support through both live and recorded lessons. Strategies to help teen students succeed in school were implemented through AVID methods. Amazon's Future Engineers provided job skills required in the new millennium.

When closures due to COVID-19 struck, PCI did not close schools or services. With the expertise and infrastructure in place, staff pivoted where needed. Virtual classes were expanded. Additional technology and internet access were immediately deployed. Communications were increased from both teachers and PCI including social media, website sections, and digital platforms. Our IT department launched tech support for families at home. When Zoom made headlines for security concerns, PCI already had Microsoft Teams. No one stopped working, and student learning continued. PCI didn't drop a ball all the way through. When PCI sees a need, it responds!



PCI TECH SUPPORT



1,250 COMPUTERS TO STUDENTS

VIRTUAL CLASSES 6TH-12TH GRADES **17**

14 SOCIAL MEDIA ACCOUNTS

3x INCREASED POSTING





CAREER & COLLEGE

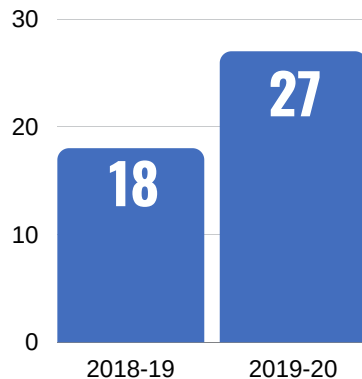


MEDICAL TERMINOLOGY
CERTIFICATIONS
WITH CONCURRENT
COLLEGE CREDIT **35**

13 EKG
CERTIFICATIONS

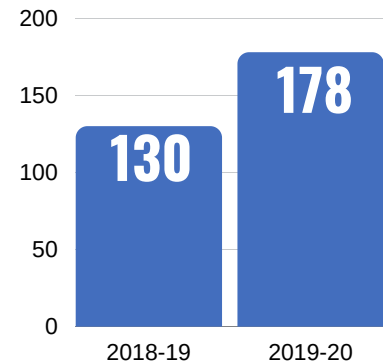
STUDENTS ACCEPTED
INTO THE UC DAVIS
HEALTH EQUITY
ACADEMY **10**

Medical Assistants



Knowing the importance of career technical education in this ever-changing landscape is fundamental. In addition to supporting community college programs through concurrent enrollment, the increase in both options and access to virtual training through iCEV's virtual platform reflects PCI's commitment to bring access to all students.

Online CTE (iCEV) Completers



Documenting & Supporting College Acceptances





GRADUATION 2020

*Social Distancing,
Shelter in Place by County,
Delayed Deliveries,
First Night of City Curfew,
and
4 Graduations?
NO PROBLEM!*

***PCI does not take the easy way out.** Our schools did not close, and graduations were not simply cancelled. Our staff found ways to provide ceremony and celebrations.*

All schools recorded ceremonies. Valley View Charter Prep staff and families were under shelter-in-place orders, but managed to virtually create their ceremony as well as produce a streamed video launch for home celebrations. Sutter Peak Charter Academy, Rio Valley Charter School, and Heritage Peak Charter School teamed up to organize a drive-in theater event across three screens as graduates and their families celebrated in a new, exciting way.

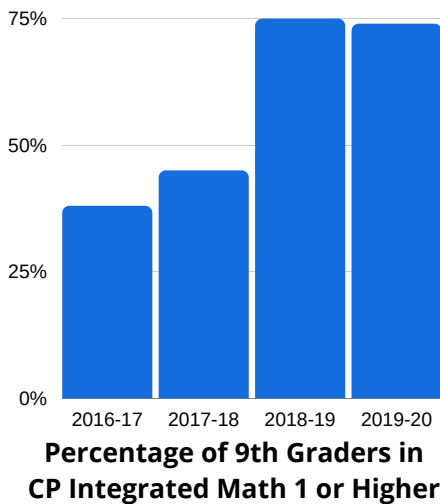




STRATEGIC GOALS

Pacific Charter Institute adopted strategic agility goals (2018-2022) as a means to close the achievement gap for students. These goals continue to be successfully locked on target. Continuous focus and innovative efforts provide students opportunities for growth and preparedness.

- 1. K-2 Academic Literacy Monitoring
- 2. Intervention Strategies in ELA & Math
- 3. 100% a-g Freshmen Placements
- 4. Career Technical Education



1 Over **91%** of our K-2nd grade students were assessed throughout the year with *The Dynamic Indicators of Basic Early Literacy Skills*.



Targeted students completed over **170,000** activities and over **20,000** hours of time on task in the Exact Path program.

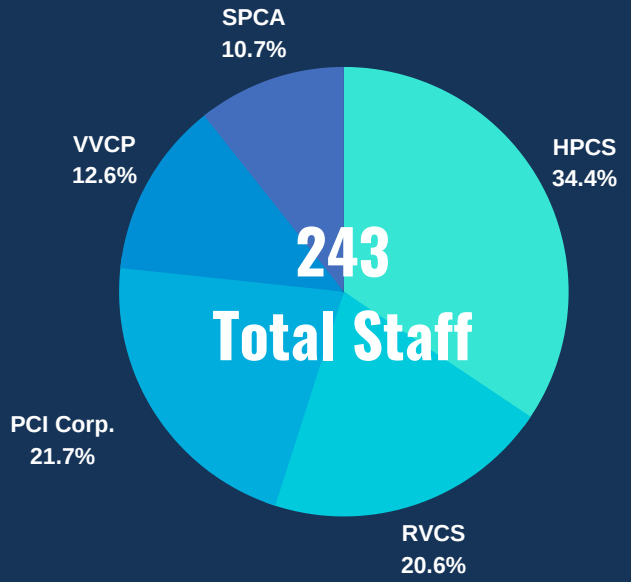
UNIVERSITY OF CALIFORNIA

3

Freshmen AND Sophomores are a-g aligned.

4 PCI's CTE certifications increased over prior year including its medical programs and online iCEV certifications. Additionally, iCEV course selections increased by 33%! (MORE CTE data can be found on page 18.)

OUR STAFF



OUR STAFF

STAFF SURVEY

Pacific Charter Institute annually administers an all-staff survey in which respondents' names are anonymous. A few highlights are below!

Increased Staff Participation Rate

68% of Staff Participation
(19% Increase)



"I feel like I belong at PCI."

92% Agree
(4% Increase)
8% Neutral

"I feel like staff cares about me."

94% Agree
(6% Increase)
6% Neutral



"I feel supported with accurate data to inform my decisions about students."

96% Agree
4% Neutral



Staff Members with Graduate Degrees

Staff Support Opportunities

- ALL PCI Day Event
- In-Person & Virtual Trainings
- Diversity Training at the Museum of Tolerance
- PowerSchool Learning
- In-House Training Videos
- PowerApps

Annual Trainings:

Youth Suicide: Awareness & Prevention

Bloodborne Pathogen Exposure Prevention

Online Safety: Cyberbullying

Mandated Reporter: Child Abuse & Neglect

Sexual Harassment Awareness & Prevention

NEW



Pacific Charter Institute



pacific_charter_institute



5,475 likes

pacific_charter_institute Take Charge of Your Education!
#pcistrong #pacificcharterinstitute #heritagepeakcharterschool
#riovalleycharterschool #sutterpeakcharteracademy
#valleyviewcharterprep





\$32.0 Million
ANNUAL BUDGET

\$5.1 Million
EMPLOYEE BENEFITS

\$9.6 Million
RESERVE FUND



PCI's Scholarship program established a Converge account for secure online scholarship contributions.

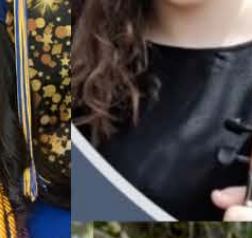
FISCAL RESPONSIBILITY

Weathering storms is something Pacific Charter Institute does well, strongly due to our fiscal stewardship. Our generous employee benefits and steady growth of our reserve funds, divided by our four schools reflects responsibility. Our schools and programs adapted services during COVID-19 including moving more home tech and internet service to students. PCI provided service in a storm when other schools simply closed. We cautiously did not take advantage of the situation either respecting our local districts. Enrollment goals held steady and wait-lists were established. We are part of our local communities, and we intend to be here for the long haul. After all, we are 15 years strong.

40% Community Partners Approved for Virtual Service

Our partners provide great services to our students. When COVID-19 caused locations closures, the PCI Business Department worked closely with each of them to confirm when virtual services were appropriate. 40% were approved.





PCI staff listed below contribute monthly to our scholarship program. Scholarships are awarded by site-based committee selection as well as graduate acceptance into a 4-year college or university. **38** scholarships were awarded this year.

SCHOLARSHIP DONORS

Special Appreciation Thomas & Barbara Keefer
Trevor Viegas

Abbott-Aronsen, Bridget M

Alfonso, Julie J
Anderson, Paula M
Aston, Debora L
Bains, Jaswinder K
Baker, Pamela O
Ball, Joy M
Bean, Nancy J
Bellecci, Marcella
Bettencourt, Rachel L
Bird, Jennifer L
Blesso, Rebecca M
Bradshaw, Laurie J
Brayton, Debra
Breakfield, Krista E
Breining, Christine A
Brook- Ellis, Jennifer A
Camargo, Vianey
Caputi, Lisa L
Chao, Jonathan
Chapman, Marguerite S
Chatman- Anderson, Rita R
Comer, Leanna W
Connor, Kristin A
Correia, Sandra D
Deardorff, Amanda
Diaz, Ruby L
Dutton, Katherine L
Eaton, Shelly L
Eberhardt, Amber J
Ellis, Michelle M
Enos, Catherine S
Fealy, Linda K

Ferrer, Carla V

Franco- Matteoli, Danielle N
Geist, Janine G
Giannecchini, Kahla L
Gluck, Alyssa
Gomes, Cheryl M
Greenhouse, Kimberly L
Grill, Marcie L
Haney, Anne K
Hines, Althea A
Hodgson, Sharron E
Hollinside, Malika
Holzman, Elizabeth M
Horton, Angela
Hurn, Sherri L
J'beily, Karyn N
Johnson, Denise M
Jones, Stacie A
Keefer, Paul A
Law, Kaitlin J
Leader, Rebecca A
Leedy, Leslie J
Leonardo, Jodi A
Long, Jennifer A
Marczak, Suzanne M
Mariano, Heather
Marquiss, Anne- Marie
Mcclain, Michael J
Mcdowell, Ruby
Mcinerney, Jennifer
Mclaughlin, Daniel T
Medrano, Isabel L
Mendoza, Miguel R

Meyers, Theresa Z

Mittan, John
Munn, Cheantell N
Myers, Rebekah A
Myers, Theresa K
Navarro, Murray S
Nguyen, Jessica
Pastore, Larry M
Pattee, Candida
Pearson, Elizabeth P
Potter, Janet L
Ramos, Angela
Ribota, Timothy A
Rodriguez, Julia A
Ross, Quanee
Sands, Jessica
Schnase, Luanne P
Schneider, Matthew W
Shankarappa, Nicole D
Sharp, Kristina
Sparrevohn, Loana P
Spratling, Christine J
Stack, Scott A
Stern, Michael J
Urfer, Lorraine R
Vernier, Donna F
Ward, Mary E
Washington, Kassondra L
Wilson, Heidi A
Woodbeck, Raymond
Ziccardi, Christine L
Zowjah- Malik, Jeri L



Advocacy

APlus+

- California Charter Schools Association
- Carmichael Chamber of Commerce
- Charter Schools Development Center
- Elk Grove Chamber of Commerce
- Lodi Chamber of Commerce
- Sacramento Hispanic Chamber of Commerce
- Sacramento Metro Chamber
- West Sacramento Chamber of Commerce
- YM&C The Charter Law Firm

Community

AmeriCorps

- Alliant International University
- California State University Sacramento
- Child Abuse Prevention Council of Sacramento
- Collins Teen Center
- Gilder Lehrman Institute of American History
- International Children's Festival
- Lodi Arts Commission
- Lodi Unified School District
- New Jerusalem Elementary School District
- Nuestro School District
- Rio Linda Elverta Historical Society
- Sacramento County Office of Education
- Sacramento Food Bank
- San Joaquin County Office of Education
- Sutter County Office of Education
- Twin Rivers Unified School District

College & Career

All Med

- CA Urgent Care
- Arnold Greenberg MD
- Harbor Oaks Medical
- Kaiser Permanente
- UC Davis
- iCEV
- American River Community College
- Berkeley City College
- Chabot College
- College of Alameda
- Columbia Community College
- Contra Costa College
- Cosumnes River Community College
- Delta Community College
- Diablo Valley Community College
- Folsom Lake Community College
- Laney College
- Las Positas College
- Los Medanos College
- Merritt College
- Modesto Junior College
- Ohlone College
- Sacramento City College
- Sierra College
- Solano Community College
- West Valley Mission Community College
- Woodland Community College
- Yuba Community College



Pacific Charter Institute
1401 El Camino Ave., Ste. 510
Sacramento, CA 95815

Pacific Charter Institute

2019-2020

